

# HOW TO START & FINISH EMBROIDERY

PHOTO

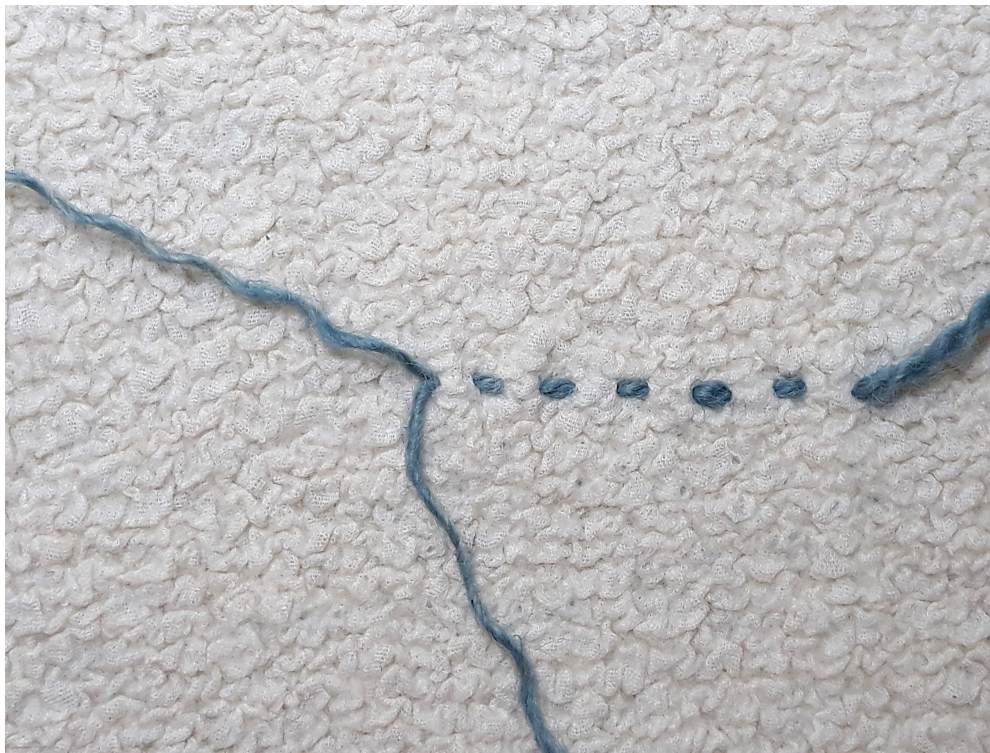
WE are working with special fabric, nuno-felt, therefore the beginning and the finishing of the embroidery stitches are different from the usual embroidery techniques.

This finishing technique is easy and neat just as on the back/wrong side of the fabric as on the front/right side.

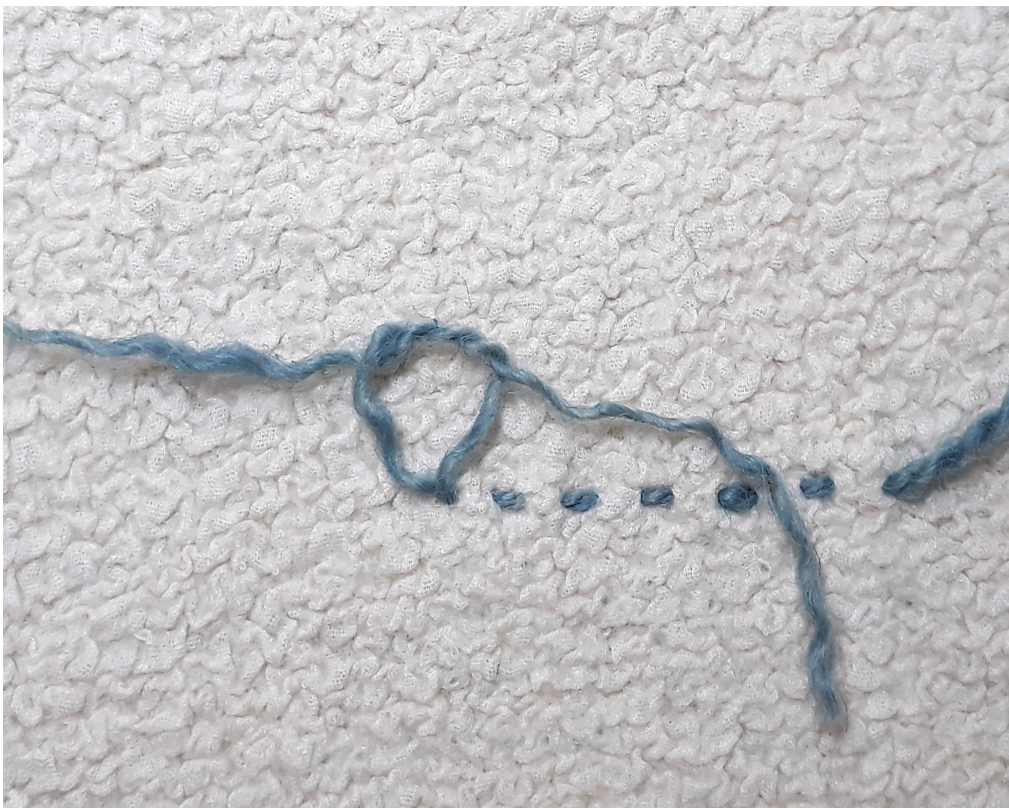


When you begin embroidery leave an approximately 3" tail on the back/wrong side of the fabric and do the same when you finish, leave another 3" tail on the back side.



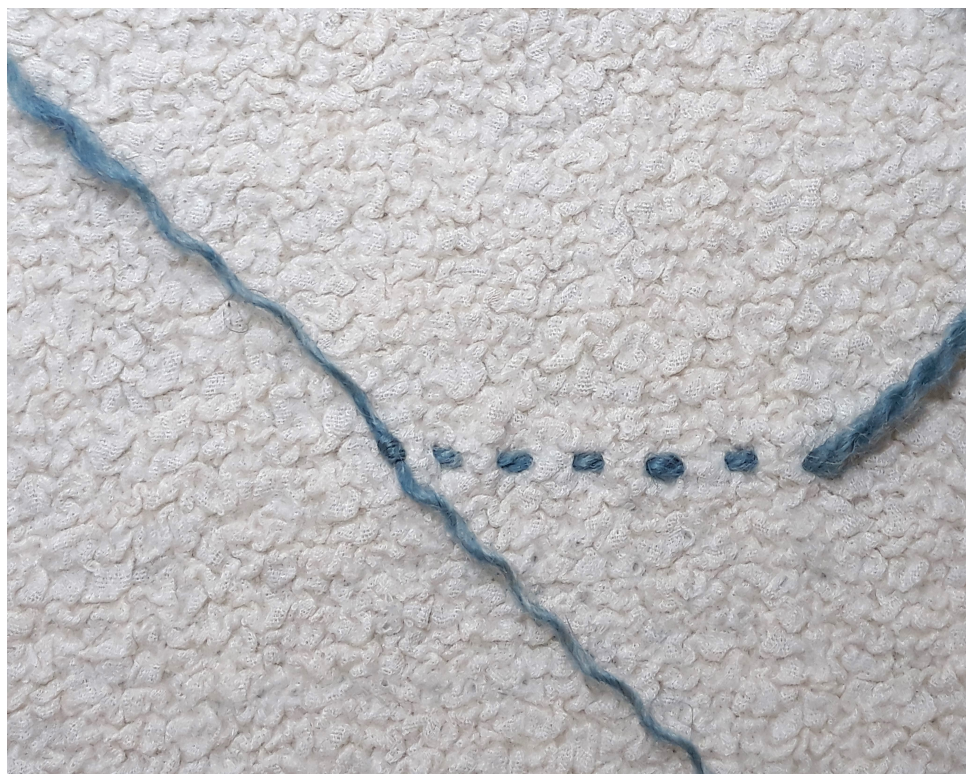


Separate the embroidery yarn into 2



Make a double knot loop



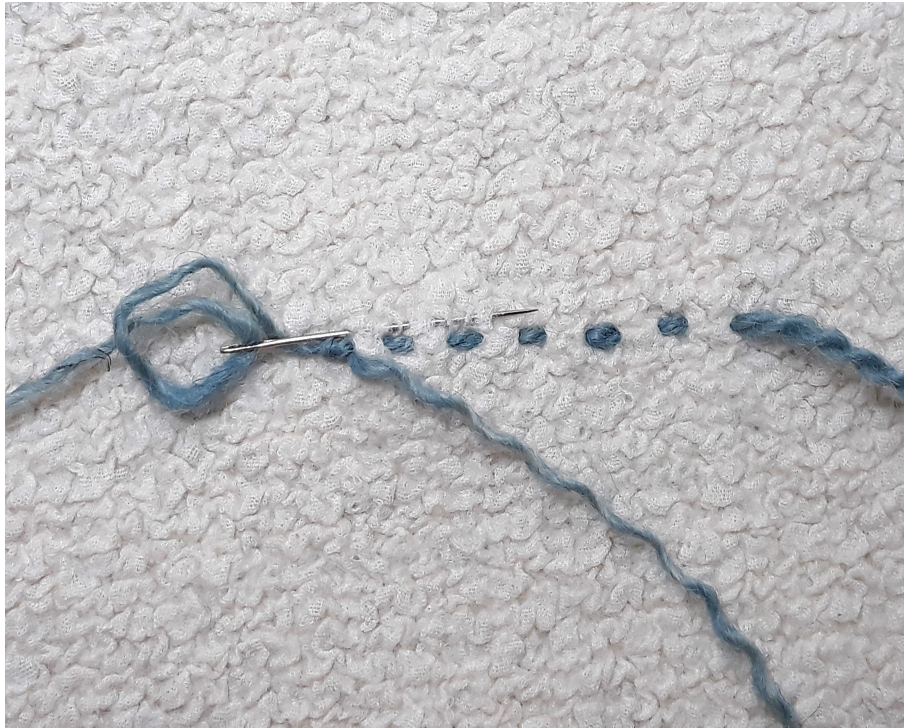


Tighten the yarn. Now you have a nice knot.



A medium size embroidery needle





Before you pull the needle through on the back side of the fabric, check the right side and make sure the yarn isn't visible there, then pull the needle through.



The yarn is not visible on the right/front side of the fabric.





Do the same with the other piece of yarn.



Carefully cut the yarn. Make sure you not cut into the fabric.





Carry on with the other tail, just like you did previously.

When the needle doesn't slide smoothly through the fabric a small jewelry pliers comes very handy.



Finished back side.





Finished right side.

© by Marianna Halassy  
[www.mariannahalassy.com](http://www.mariannahalassy.com)